

## SMD POWER INDUCTOR CKO Series

### 贴片功率电感 CKO 系列

#### ● FEATURES 特性

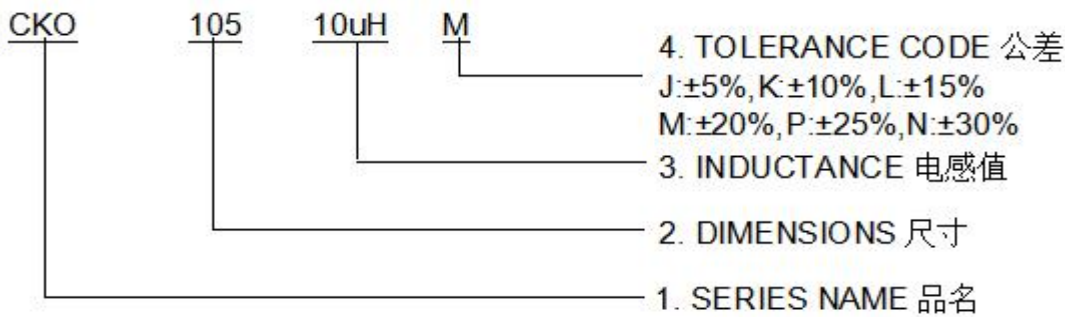
Various high power inductors are superior to be high saturation for surface mounting.  
具有高功率、高饱和电流、低电阻特性。



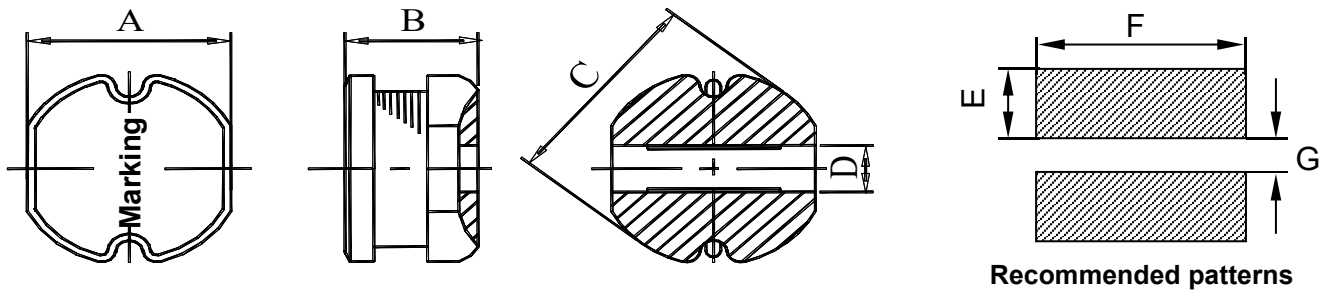
#### ● APPLICATIONS 用途

Power supply for TVR,OA equipment,audio,LED television ,  
communication equipments,DC/DC converters,etc.  
录影机, OA仪器, 音箱, LED电视, 通信设备, DC/DC转换器

#### ● PART NUMBERING SYSTEM 品名系统



#### ● SHAPES AND DIMENSIONS 外形尺寸 (Unit:mm)



TYPE(型号)	A	B	C	D	E	F	G
CKO32	3.0±0.3	2.1±0.3	3.5±0.3	1.0	1.6	3.5	0.8
CKO43	4.0±0.3	3.2±0.3	4.5±0.3	1.5	1.75	4.5	1.2
CKO53	5.2±0.3	3.0±0.3	5.8±0.3	2.1	2.15	5.5	1.7
CKO54	5.2±0.3	4.5±0.3	5.8±0.3	2.1	2.15	5.5	1.7
CKO75	7.0±0.3	5.0±0.3	7.8±0.3	2.5	3.0	7.5	2.0
CKO104	9.0±0.3	4.0±0.3	10.0±0.3	3.3	3.75	9.5	2.6
CKO105	9.0±0.3	5.4±0.3	10.0±0.3	3.3	3.75	9.5	2.6
CKO106	9.0±0.3	6.5±0.5	10.0±0.3	3.3	3.75	9.5	2.6
CKO108	9.0±0.3	8.3±0.5	10.0±0.3	3.3	3.75	9.5	2.6

● SPECIFICATION TABLE 规格特性表

**CKO32**

PART NUMBER 品名	INDUCTANCE (uH) 电感值	DCR (Max) (Ω) 直流电阻	IDC (Max) (A) 额定电流
CKO32-1uH/N	1±30%	0.045	2.20
CKO32-1.5uH/N	1.5±30%	0.055	2.00
CKO32-2.2uH/M	2.2±20%	0.09	1.80
CKO32-3.3uH/M	3.3±20%	0.11	1.70
CKO32-4.7uH/M	4.7±20%	0.15	1.50
CKO32-6.8uH/M	6.8±20%	0.22	1.10
CKO32-10uH/M	10±20%	0.27	0.90
CKO32-15uH/M	15±20%	0.42	0.70
CKO32-22uH/M	22±20%	0.68	0.60
CKO32-33uH/M	33±20%	0.90	0.45
CKO32-47uH/M	47±20%	1.20	0.30
CKO32-56uH/M	56±20%	1.40	0.28
CKO32-68uH/M	68±20%	1.80	0.25
CKO32-82uH/M	82±20%	2.10	0.22
CKO32-100uH/M	100±20%	2.40	0.20
CKO32-150uH/M	150±20%	3.80	0.15

**Remark:** 1. All test data is reference to 25°C ambient.

2. Inductance Tested at 100kHz,0.25Vrms

3. IDC: DC current at which the inductance drops approximate 20% from its value without current;

4. Operating Temperature : -40°C ~ +125°C(Including self - temperature rise)

**CKO43**

PART NUMBER 品名	INDUCTANCE (uH) 电感值	DCR (Max) (Ω) 直流电阻	IDC (Max) (A) 额定电流
CKO43-1uH/N	1±30%	0.025	3.00
CKO43-1.5uH/N	1.5±30%	0.032	2.70
CKO43-2.2uH/M	2.2±20%	0.045	2.50
CKO43-3.3uH/M	3.3±20%	0.065	2.10
CKO43-4.7uH/M	4.7±20%	0.075	1.80
CKO43-6.8uH/M	6.8±20%	0.10	1.60
CKO43-10uH/M	10±20%	0.14	1.20
CKO43-15uH/M	15±20%	0.23	1.00
CKO43-22uH/M	22±20%	0.30	0.75
CKO43-33uH/M	33±20%	0.42	0.70
CKO43-47uH/M	47±20%	0.58	0.50
CKO43-68uH/M	68±20%	0.935	0.45
CKO43-82uH/M	82±20%	1.00	0.40
CKO43-100uH/□	100±10% / ±20%	1.30	0.30
CKO43-150uH/□	150±10% / ±20%	2.00	0.25
CKO43-220uH/□	220±10% / ±20%	2.70	0.20
CKO43-330uH/□	330±10% / ±20%	3.60	0.18
CKO43-470uH/□	470±10% / ±20%	6.00	0.15

**Remark:** 1. All test data is reference to 25°C ambient.

2. Inductance Tested at 100kHz,0.25Vrms

3. IDC: DC current at which the inductance drops approximate 20% from its value without current;

4. Operating Temperature : -40°C ~ +125°C(Including self - temperature rise)

5. □ Tolerance: M:±20% , K:±10%

**CKO53**

PART NUMBER 品名	INDUCTANCE (uH) 电感值	DCR (Max) (Ω) 直流电阻	IDC (Max) (A) 额定电流
CKO53-1uH/N	1±30%	0.028	6.00
CKO53-1.5uH/N	1.5±30%	0.035	3.50
CKO53-2.2uH/M	2.2±20%	0.04	3.00
CKO53-3.3uH/M	3.3±20%	0.055	2.80
CKO53-4.7uH/M	4.7±20%	0.07	2.60
CKO53-6.8uH/M	6.8±20%	0.09	2.40
CKO53-10uH/M	10±20%	0.12	2.00
CKO53-15uH/M	15±20%	0.18	1.80
CKO53-22uH/M	22±20%	0.26	1.60
CKO53-33uH/M	33±20%	0.38	1.20
CKO53-47uH/M	47±20%	0.57	1.00
CKO53-68uH/M	68±20%	0.68	0.80
CKO53-82uH/M	82±20%	0.86	0.70
CKO53-100uH/□	100±10% / ±20%	0.96	0.65
CKO53-220uH/□	220±10% / ±20%	2.10	0.30
CKO53-330uH/□	330±10% / ±20%	4.00	0.25
CKO53-470uH/□	470±10% / ±20%	5.30	0.20
CKO53-680uH/□	680±10% / ±20%	8.00	0.18

**Remark:** 1. All test data is reference to 25°C ambient.

2. Inductance Tested at 100kHz,0.25Vrms

3. IDC: DC current at which the inductance drops approximate 20% from its value without current;

4. Operating Temperature : -40°C ~ +125°C(Including self - temperature rise)

5. □ Tolerance: M:±20% , K:±10%

**CKO54**

PART NUMBER 品名	INDUCTANCE (uH) 电感值	DCR (Max) (Ω) 直流电阻	IDC (Max) (A) 额定电流
CKO54-1.2uH/N	1.2±30%	0.019	4.50
CKO54-1.5uH/N	1.5±30%	0.021	4.20
CKO54-2.2uH/M	2.2±20%	0.026	3.50
CKO54-3.3uH/M	3.3±20%	0.035	3.00
CKO54-4.7uH/M	4.7±20%	0.045	2.80
CKO54-6.8uH/M	6.8±20%	0.06	2.50
CKO54-10uH/M	10±20%	0.08	2.30
CKO54-15uH/M	15±20%	0.12	1.80
CKO54-22uH/M	22±20%	0.15	1.20
CKO54-33uH/M	33±20%	0.22	1.00
CKO54-47uH/M	47±20%	0.36	0.85
CKO54-68uH/M	68±20%	0.46	0.60
CKO54-82uH/M	82±20%	0.53	0.55
CKO54-100uH/□	100±10% / ±20%	0.70	0.50
CKO54-220uH/□	220±10% / ±20%	1.60	0.40
CKO54-330uH/□	330±10% / ±20%	2.70	0.30
CKO54-470uH/□	470±10% / ±20%	3.60	0.28
CKO54-1mH/□	1000±10% / ±20%	5.60	0.12

**Remark:** 1. All test data is reference to 25°C ambient.

2. Inductance Tested at 100kHz,0.25Vrms

3. IDC: DC current at which the inductance drops approximate 20% from its value without current;

4. Operating Temperature : -40°C ~ +125°C(Including self - temperature rise)

5. □ Tolerance: M:±20% , K:±10%

**CKO75**

PART NUMBER 品名	INDUCTANCE ( $\mu$ H) 电感值	DCR (Max) ( $\Omega$ ) 直流电阻	IDC (Max) (A) 额定电流
CKO75-1uH/N	1 $\pm$ 30%	0.018	5.50
CKO75-1.5uH/N	1.5 $\pm$ 30%	0.025	5.30
CKO75-2.2uH/N	2.2 $\pm$ 30%	0.03	5.00
CKO75-3.3uH/M	3.3 $\pm$ 20%	0.04	4.50
CKO75-4.7uH/M	4.7 $\pm$ 20%	0.05	4.00
CKO75-6.8uH/M	6.8 $\pm$ 20%	0.06	3.50
CKO75-10uH/M	10 $\pm$ 20%	0.08	2.80
CKO75-15uH/M	15 $\pm$ 20%	0.09	2.70
CKO75-22uH/M	22 $\pm$ 20%	0.12	2.20
CKO75-33uH/M	33 $\pm$ 20%	0.18	1.50
CKO75-47uH/M	47 $\pm$ 20%	0.21	1.20
CKO75-68uH/M	68 $\pm$ 20%	0.29	1.00
CKO75-100uH/ $\square$	100 $\pm$ 10% / $\pm$ 20%	0.41	0.80
CKO75-220uH/ $\square$	220 $\pm$ 10% / $\pm$ 20%	0.78	0.60
CKO75-330uH/ $\square$	330 $\pm$ 10% / $\pm$ 20%	1.42	0.40
CKO75-470uH/ $\square$	470 $\pm$ 10% / $\pm$ 20%	2.00	0.30
CKO75-1mH/ $\square$	1000 $\pm$ 10% / $\pm$ 20%	4.00	0.25
CKO75-1.2mH/ $\square$	1200 $\pm$ 10% / $\pm$ 20%	4.70	0.23
CKO75-1.5mH/ $\square$	1500 $\pm$ 10% / $\pm$ 20%	5.70	0.20
CKO75-2.2mH/ $\square$	2200 $\pm$ 10% / $\pm$ 20%	8.00	0.10

**Remark:** 1. All test data is reference to 25 $^{\circ}$ C ambient.

2. Inductance Tested at 100kHz,0.25Vrms

3. IDC: DC current at which the inductance drops approximate 20% from its value without current;

4. Operating Temperature : -40 $^{\circ}$ C ~ +125 $^{\circ}$ C(Including self - temperature rise)

5.  $\square$  Tolerance: M: $\pm$ 20% , K: $\pm$ 10%

**CKO104**

PART NUMBER 品名	INDUCTANCE ( $\mu$ H) 电感值	DCR (Max) ( $\Omega$ ) 直流电阻	IDC (Max) (A) 额定电流
CKO104-10uH/M	10 $\pm$ 20%	0.06	4.00
CKO104-15uH/M	15 $\pm$ 20%	0.09	3.50
CKO104-22uH/M	22 $\pm$ 20%	0.14	2.80
CKO104-33uH/M	33 $\pm$ 20%	0.16	2.50
CKO104-47uH/M	47 $\pm$ 20%	0.20	2.10
CKO104-68uH/M	68 $\pm$ 20%	0.27	1.50
CKO104-82uH/M	82 $\pm$ 20%	0.33	1.40
CKO104-100uH/ $\square$	100 $\pm$ 10% / $\pm$ 20%	0.42	1.20
CKO104-220uH/ $\square$	220 $\pm$ 10% / $\pm$ 20%	1.00	0.80
CKO104-330uH/ $\square$	330 $\pm$ 10% / $\pm$ 20%	1.30	0.65
CKO104-470uH/ $\square$	470 $\pm$ 10% / $\pm$ 20%	1.80	0.60
CKO104-560uH/ $\square$	560 $\pm$ 10% / $\pm$ 20%	2.10	0.55
CKO104-680uH/ $\square$	680 $\pm$ 10% / $\pm$ 20%	2.50	0.50
CKO104-820uH/ $\square$	820 $\pm$ 10% / $\pm$ 20%	2.90	0.40
CKO104-1mH/ $\square$	1000 $\pm$ 10% / $\pm$ 20%	3.70	0.35

**Remark:** 1. All test data is reference to 25 $^{\circ}$ C ambient.

2. Inductance Tested at 100kHz,0.25Vrms

3. IDC: DC current at which the inductance drops approximate 20% from its value without current;

4. Operating Temperature : -40 $^{\circ}$ C ~ +125 $^{\circ}$ C(Including self - temperature rise)

5.  $\square$  Tolerance: M: $\pm$ 20% , K: $\pm$ 10%

**CKO105**

PART NUMBER 品名	INDUCTANCE (uH) 电感值	DCR (Max) (Ω) 直流电阻	IDC (Max) (A) 额定电流
CKO105-4.7uH/M	4.7±20%	0.035	5.00
CKO105-6.8uH/M	6.8±20%	0.04	4.50
CKO105-10uH/M	10±20%	0.06	4.00
CKO105-15uH/M	15±20%	0.08	3.00
CKO105-22uH/M	22±20%	0.10	2.50
CKO105-33uH/M	33±20%	0.15	2.10
CKO105-47uH/M	47±20%	0.17	1.80
CKO105-68uH/M	68±20%	0.25	1.50
CKO105-100uH/□	100±10% / ±20%	0.30	1.20
CKO105-150uH/□	150±10% / ±20%	0.43	1.10
CKO105-220uH/□	220±10% / ±20%	0.70	0.80
CKO105-330uH/□	330±10% / ±20%	0.90	0.65
CKO105-470uH/□	470±10% / ±20%	1.30	0.55
CKO105-680uH/□	680±10% / ±20%	1.75	0.45
CKO105-1mH/□	1000±10% / ±20%	2.70	0.35
CKO105-1.2mH/□	1200±10% / ±20%	3.50	0.30
CKO105-1.5mH/□	1500±10% / ±20%	3.90	0.25
CKO105-1.8mH/□	1800±10% / ±20%	5.00	0.20
CKO105-3mH/□	3000±10% / ±20%	8.50	0.15

**Remark:** 1. All test data is reference to 25°C ambient.

2. Inductance Tested at 100kHz,0.25Vrms

3. IDC: DC current at which the inductance drops approximate 20% from its value without current;

4. Operating Temperature : -40°C ~ +125°C(Including self - temperature rise)

5. □ Tolerance: M:±20% , K:±10%



**CKO106**

PART NUMBER 品名	INDUCTANCE ( $\mu$ H) 电感值	DCR (Max) ( $\Omega$ ) 直流电阻	IDC (Max) (A) 额定电流
CKO106-1mH/K	1000 $\pm$ 10%	2.8	0.60
CKO106-1.2mH/K	1200 $\pm$ 10%	3.0	0.50
CKO106-2.2mH/K	2200 $\pm$ 10%	5.7	0.35
CKO106-3mH/K	3000 $\pm$ 10%	7.2	0.30
CKO106-3.5mH/K	3500 $\pm$ 10%	9.1	0.26
CKO106-4.5mH/K	4500 $\pm$ 10%	11.5	0.20
CKO106-4.7mH/K	4700 $\pm$ 10%	12.1	0.18

**CKO108**

PART NUMBER 品名	INDUCTANCE ( $\mu$ H) 电感值	DCR (Max) ( $\Omega$ ) 直流电阻	IDC (Max) (A) 额定电流
CKO108-100uH/M	100 $\pm$ 20%	0.236	2.00
CKO108-300uH/M	300 $\pm$ 20%	0.581	1.20
CKO108-350uH/M	350 $\pm$ 20%	0.660	1.00
CKO108-500uH/M	500 $\pm$ 20%	0.956	0.80
CKO108-1mH/K	1000 $\pm$ 10%	1.80	0.60
CKO108-1.5mH/K	1500 $\pm$ 10%	2.85	0.50
CKO108-2mH/K	2000 $\pm$ 10%	3.64	0.40
CKO108-2.5mH/K	2500 $\pm$ 10%	5.20	0.35
CKO108-2.8mH/K	2800 $\pm$ 10%	5.53	0.34
CKO108-3mH/K	3000 $\pm$ 10%	6.08	0.33
CKO108-4mH/K	4000 $\pm$ 10%	7.80	0.28

**Remark:** 1. All test data is reference to 25 $^{\circ}$ C ambient.

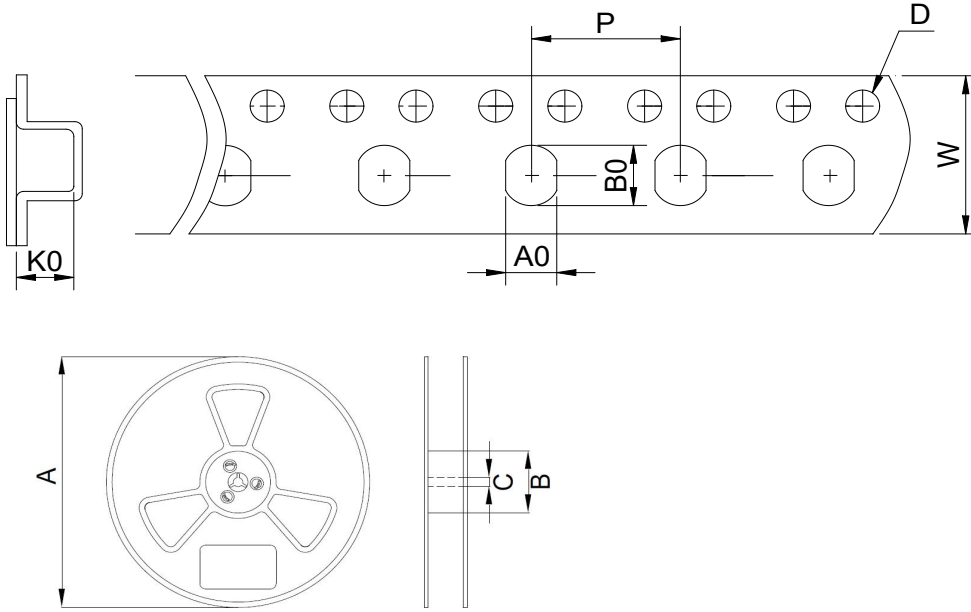
2. Inductance Tested at 100kHz,0.25Vrms

3. IDC: DC current at which the inductance drops approximate 20% from its value without current;

4. Operating Temperature : -40 $^{\circ}$ C ~ +125 $^{\circ}$ C(Including self - temperature rise)

5.  Tolerance: M: $\pm$ 20% , K: $\pm$ 10%

● PACKAGING SPECIFICATION 包装规格



TYPE(型号)	Tape Dimension 载带尺寸(mm)						Reel Dimension 卷盘尺寸 (mm)			Quantity (Pcs/Reel) 数量 (个/卷)
	W	A0	B0	K0	D	P	A	B	C	
CKO32	12.0	3.3	3.8	2.5	1.5	8.0	330	100	13	3000
CKO43	12.0	4.2	4.8	3.5	1.5	8.0	330	100	13	2000
CKO53	12.0	5.5	6.1	3.6	1.5	8.0	330	100	13	2000
CKO54	12.0	5.6	6.3	5.2	1.5	8.0	330	100	13	1500
CKO75	16.0	7.6	8.6	5.6	1.5	12.0	330	100	13	1000
CKO104	24.0	9.1	10.1	4.8	1.5	12.0	330	100	13	1000
CKO105	24.0	9.1	10.1	6.1	1.5	12.0	330	100	13	1000
CKO106	24.0	9.1	10.1	7.3	1.5	12.0	330	100	13	750
CKO108	24.0	9.1	10.1	9.0	1.5	12.0	330	100	13	500